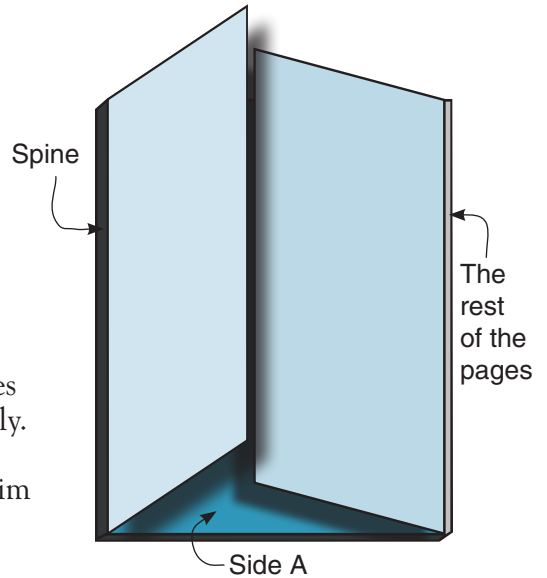


Tech Note 38: "Barn Door" Covers

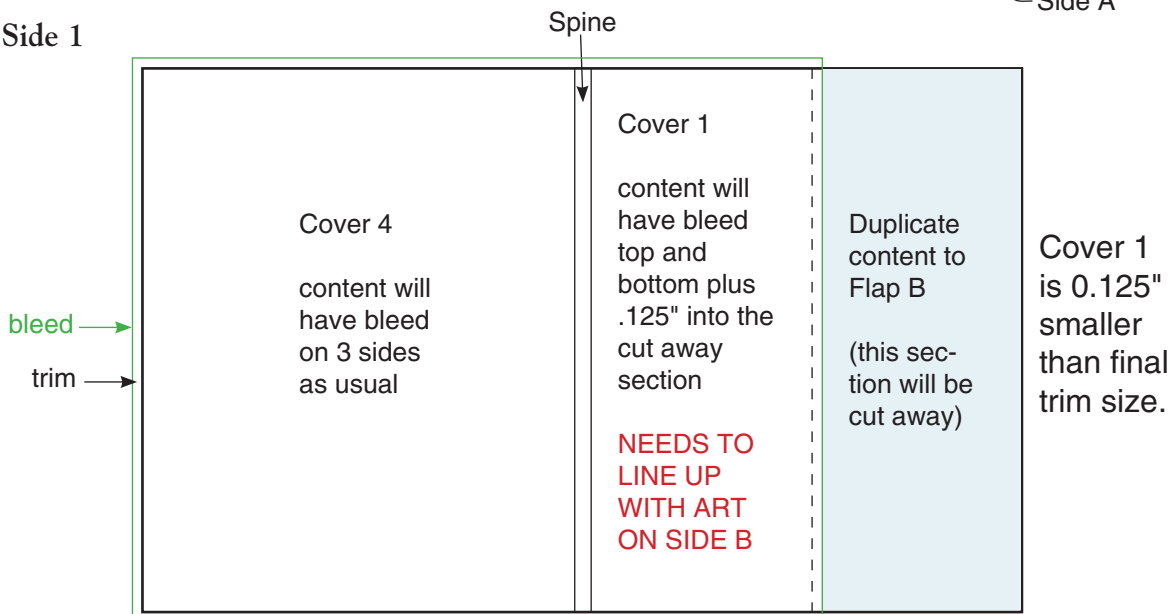
Created: June 2008

"Barn Door" covers are a special style of cover that opens outward from the middle of the front cover... like two barn doors. This allows extra advertising and/or alternate cover text. This technique is used on perfect-bound covers only. Since the covers are made up of four files (instead of the usual two) and the front cover is split in two pieces extra attention is necessary to ensure that all the parts line up correctly.

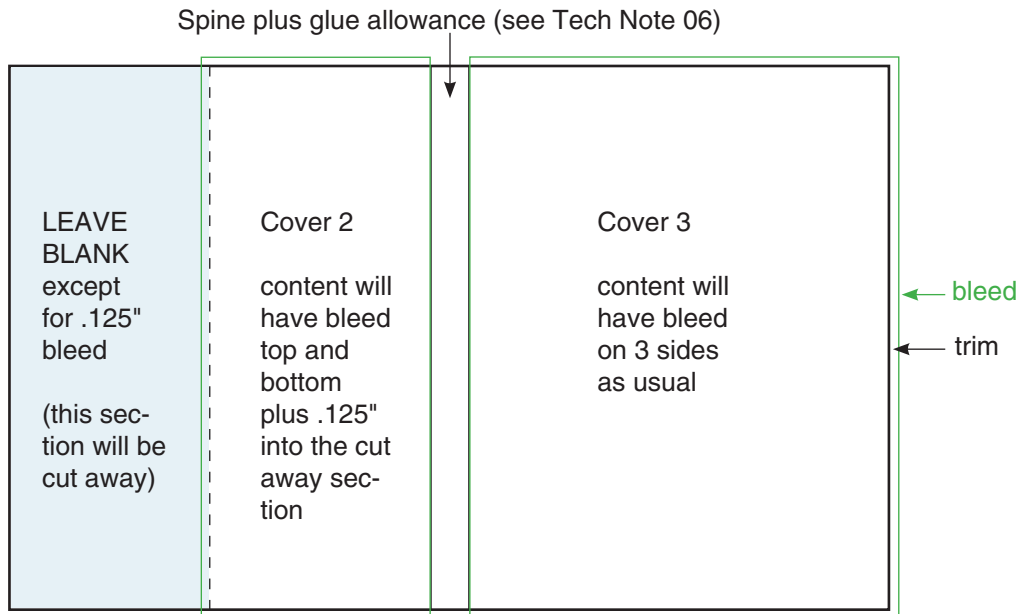
FOLLOW THESE INSTRUCTIONS (making adjustments for the trim size of your particular magazine):



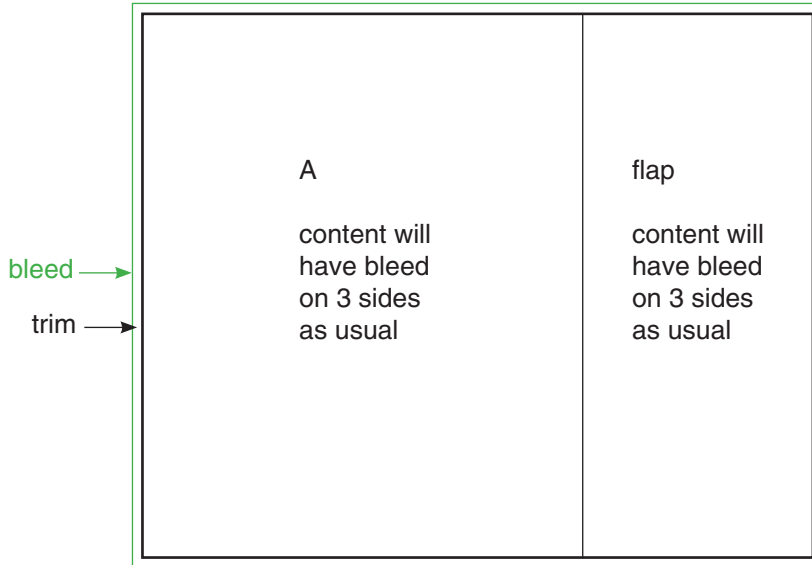
Cover Side 1



Cover Side 2

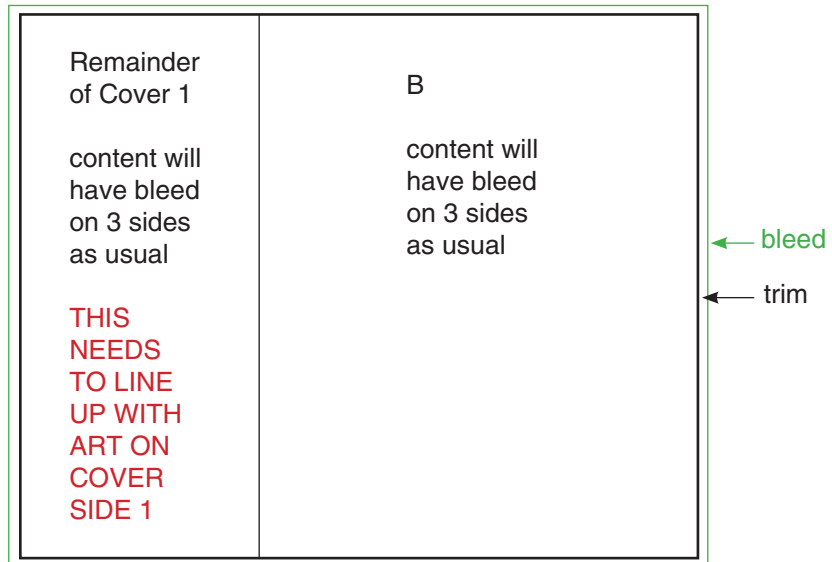


Side A (inside of Cover 1)



The files for A and B should be made as a full trim-size page plus the flap ONLY.

Side B (contains remainder of Cover 1 and the page facing text page 1)



HOW THE PIECES GO TOGETHER:

